

QUALITY
RELIABILITY
TRUE VALUE

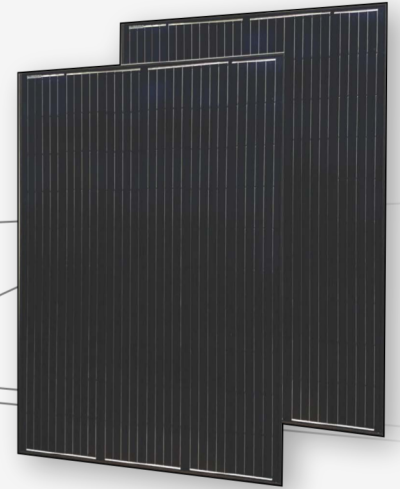


SunSpark

Technology Inc.

Buy American and Reduce Your Carbon Footprint

MONO MODULE



60 CELL PERC

Black Backsheet

310W, 315W, 320W,
325W, 330W, 335W



Better Temperature Coefficient

Excellent temperature coefficient gives higher yield in the long term



Low-light Performance

Outstanding performance in weak-light conditions



PID

PID Free

Excellent PID resistance



+

Positive Tolerance

Positive tight power tolerance of +5W



2
EL

Quality Assurance

Double state 100% EL inspection warranting defect-free products, with 8 high tech cameras to zoom in for a closer examination



Durability And Weather Resistance

- Severe salt mist, ammonia & blown sand resistance for seaside, farm and desert environments.
- Certified for high snow (5400 pa) and wind (2400 pa) loads

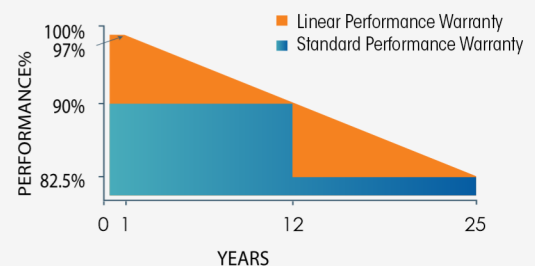
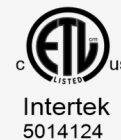


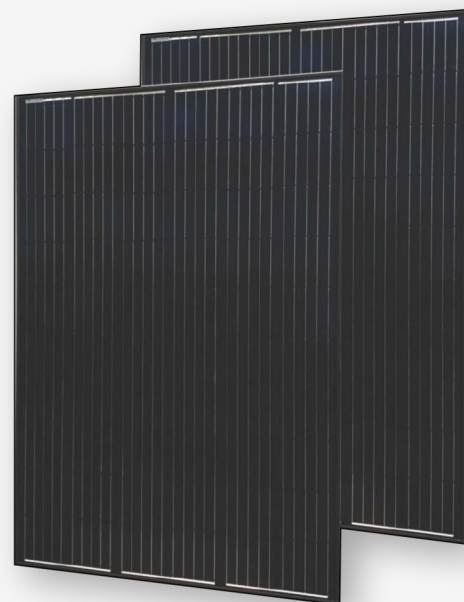
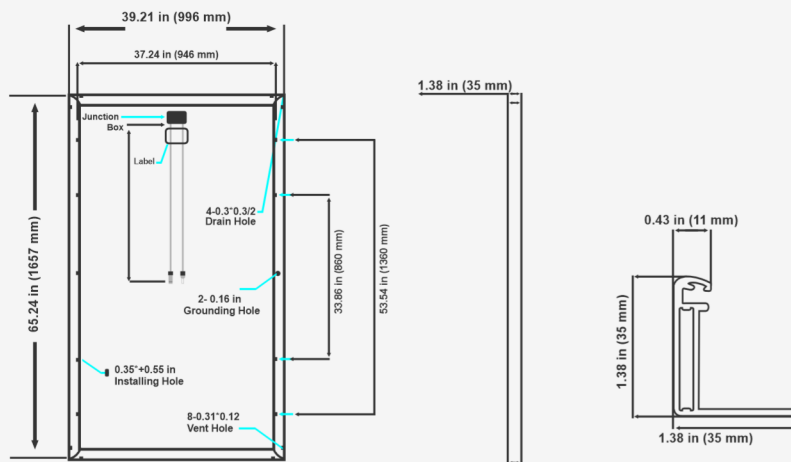
MADE IN CALIFORNIA



LINEAR WARRANTY

12 YEARS
WORKMANSHIP
WARRANTY





Mono Module

60 Cell 310W, 315W, 320W, 325W, 330W, 335W

ELECTRICAL SPECIFICATIONS

	SST-310M3B	SST-315M3B	SST-320M3B	SST-325M3B	SST-330M3B	SST-335M3B
Maximum Power (Pmax)	310W	315W	320W	325W	330W	335W
Power Tolerance	±3%W	±3%W	±3%W	±3%W	±3%W	±3%W
Module Efficiency	18.78%	19.09%	19.39%	19.69%	20.00%	20.30%
Maximum Power Current (Imp)	9.52A	9.58A	9.65A	9.72A	9.78A	9.85A
Maximum Power Voltage (Vmp)	32.61V	32.90V	33.18V	33.45V	33.76V	34.07V
Short Circuit Current (Isc)	10.04A	10.11A	10.18A	10.25A	10.32A	10.39A
Open Circuit Voltage (Voc)	40.30V	40.53V	40.78V	41.04V	41.3V	41.59V

MECHANICAL DATA

Cell Type	Mono crystalline 6.25 in. 60 (6x10) pcs
Glass	High transmission, low iron, tempered glass
Frame	Anodized aluminum alloy
Junction Box	IP65/IP67 rated, with bypass diodes
Dimension	65.24x39.21x1.38 in.(1657x996x35mm)
Output Cable	4mm ² (EU)/12AWG (US), 39.37 in. (1000mm)
Weight	40.57lbs(18.4Kg)
Installation Hole Location	See drawing above

CHARACTERISTICS

Temperature Coefficient of Voc	-0.2653% / °C
Temperature Coefficient of Isc	0.0052% / °C
Temperature Coefficient of Pmax	-0.3955% / °C
Nominal Operating Cell Temperature (NOCT)	45°C (±2°C)
Module Fire Performance	Type 1
Design Snow Load	5400 Pa
Design Wind Load	2400 Pa
Maximum System Voltage	1500 VDC
Maximum Series Fuse Rating	20A

PACKAGING

Standard packaging	30pcs/pallet
Module quantity per 53' container	1020pcs


SunSpark
 Technology Inc.
 3080 12th St,
 Riverside, CA 92507
 ☎ 951.342.3050
 ✉ sales@sunsparkusa.com

